

GP-C830/831/832

# HVP Plug-in Module User's Guide

---

## Product Overview

Describes features for the product.

## Installation

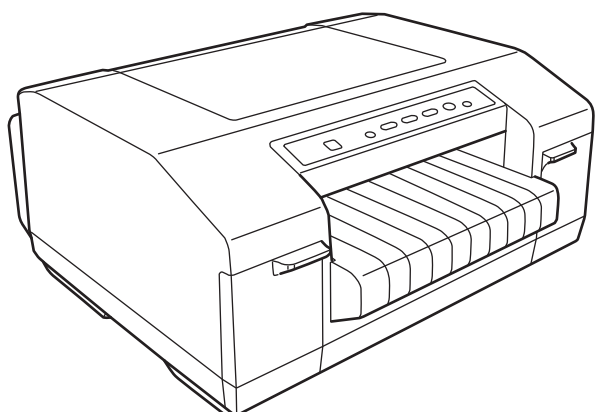
Describes how to install the product.

## Set up

Describes how to set up the product.

## Product information

Describes information about the product.



## Cautions

- No part of this document may be reproduced, stored in a retrieval system, or transmitted in any form or by any means, electronic, mechanical, photocopying, recording, or otherwise, without the prior written permission of Seiko Epson Corporation.
- The contents of this document are subject to change without notice. Please contact us for the latest information.
- While every precaution has taken in the preparation of this document, Seiko Epson Corporation assumes no responsibility for errors or omissions.
- Neither is any liability assumed for damages resulting from the use of the information contained herein.
- Neither Seiko Epson Corporation nor its affiliates shall be liable to the purchaser of this product or third parties for damages, losses, costs, or expenses incurred by the purchaser or third parties as a result of: accident, misuse, or abuse of this product or unauthorized modifications, repairs, or alterations to this product, or (excluding the U.S.) failure to strictly comply with Seiko Epson Corporation's operating and maintenance instructions.
- Seiko Epson Corporation shall not be liable against any damages or problems arising from the use of any options or any consumable products other than those designated as Original EPSON Products or EPSON Approved Products by Seiko Epson Corporation.

## Trademarks

Microsoft®, Windows®, Windows Vista®, Windows Server®, Win32®, Visual Basic®, Visual C++®, and Visual C#® are registered trademarks of Microsoft Corporation in the United States and other countries.

EPSON is a registered trademark of Seiko Epson Corporation.

Exceed Your Vision is a registered trademark or trademark of Seiko Epson Corporation.

All other trademarks are the property of their respective owners and used for identification purpose only.



SAP and other SAP products and services mentioned herein as well as their respective logos are trademarks or registered trademarks of SAP AG in Germany and in several other countries.

Copyright © 2015 Seiko Epson Corporation. All rights reserved.

## For Safety

### Key to Symbols

The symbols in this manual are identified by their level of importance, as defined below. Read the following carefully before handling the product.

	Provides information that must be observed to avoid damage to your equipment or a malfunction.
	Provides important information and useful tips.

## Restriction of Use

When this product is used for applications requiring high reliability/safety such as transportation devices related to aviation, rail, marine, automotive etc.; disaster prevention devices; various safety devices etc; or functional/precision devices etc, you should use this product only after giving consideration to including fail-safes and redundancies into your design to maintain safety and total system reliability. Because this product was not intended for use in applications requiring extremely high reliability/safety such as aerospace equipment, main communication equipment, nuclear power control equipment, or medical equipment related to direct medical care etc, please make your own judgment on this product's suitability after a full evaluation.

---

## About this Manual

### Aim of the Manual

This manual is intended for users of the software and development engineers to provide information about how to use the GP-C830/831/832 HVP Plug-in Module.

### Manual Content

The manual is made up of the following sections:

- Chapter 1      [Product Overview](#)
- Chapter 2      [Installation](#)
- Chapter 3      [Set up](#)
- Chapter 4      [Product information](#)

# Contents

■ For Safety .....	3
Key to Symbols .....	3
■ Restriction of Use .....	3
■ About this Manual .....	4
Aim of the Manual.....	4
Manual Content .....	4
■ Contents .....	5

---

## Product Overview ..... 6

■ Introduction .....	6
■ Basic Functions and Features .....	7
■ About the package .....	7
■ Specifications and Restrictions .....	8

---

## Installation ..... 9

■ Operating Environment .....	9
■ Installation .....	9

---

## Set up ..... 10

---

## Product information ..... 16

■ OPEN SOURCE SOFTWARE LICENSE .....	16
--------------------------------------	----

# Product Overview

## *Introduction*

---

### About this manual

This manual is a User's Guide for the HVP plug-in for EPSON GP-C83x.

This manual explains the HVP plug-in software, which is required when the printer (GP-C830/831/832) is built into the SAP EH&S WWI HVP System.



HVP is the abbreviation of High Volume Printing.

---

### SAP EH&S WWI HVP System

For SAP EH&S WWI HVP System, refer to SAP Note.

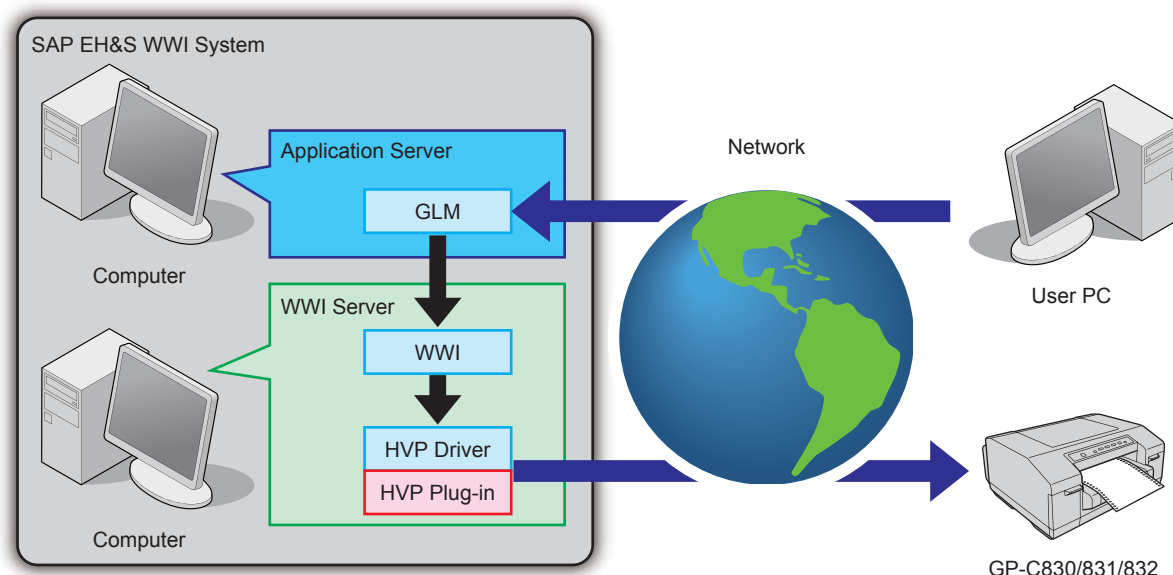
SAP Note can be obtained from SAP Support Portal (<https://support.sap.com/home.html>).

Before reading this manual, make sure to read the following SAP Note.

SAP Note No.1394553: EH&S WWI server installation instructions

## Basic Functions and Features

When using SAP EH&S WWI HVP System to perform a large volume of printing via a network, using HVP plug-in for EPSON GP-C83x allows you to reduce the load on the server or traffic in the network.



GLM is the abbreviation of Global Label Management.

## About the package

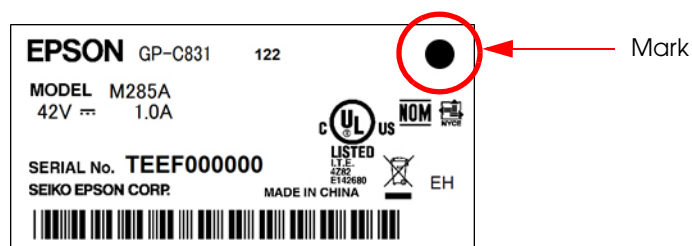
HVP plug-in for EPSON GP-C83x's package file "GP-C83x\_HVP1003.zip" contains the following files.

Item	Description
x86\HVP_PLUGIN_GP-C83x.dll	HVP plug-in module for 32-bit OS
x64\HVP_PLUGIN_GP-C83x.dll	HVP plug-in module for 64-bit OS
GP-C830_831_832_HVP_Plug-in_Module_User's_Guide_en_rev.A.pdf	This manual
OSS.pdf	Open Source Software License Terms
readme.txt	Release notes

## Specifications and Restrictions

If SAP EH&S WWI HVP System is not used, HVP plug-in for EPSON GP-C83x cannot be used.

The HVP plug-in for EPSON GP-C83x can be used with models which have the following mark on the nameplate label on the back of the GP-C830/831/832.



Can be used only with Ethernet interface (100BASE-TX/10BASE-T interface).

Cannot be used with parallel interface and USB interface.



# Installation

## Operating Environment

---

### OS

- Windows 8.1 (32/64bit)
- Windows 8 (32/64bit)
- Windows 7 SP1 (32/64bit)
- Windows Server 2012 R2
- Windows Server 2012
- Windows Server 2008 R2 SP1
- Windows Server 2008 SP2 (32/64bit)

---

### Software

SAP EH&S WWI 3.2 SP38 and later

## Installation



For details, see SAP Note No.1394553 "EH&S WWI server installation instructions", Section "4.8.2 Setup SAP EH&S WWI HVP printer".

---

### 32-bit OS environment

Copy x86\HVP\_PLUGIN\_GP-C83x.dll to the following folder.

C:\Windows\System32\Spool\Drivers\w32x86\3

---

### 64-bit OS environment

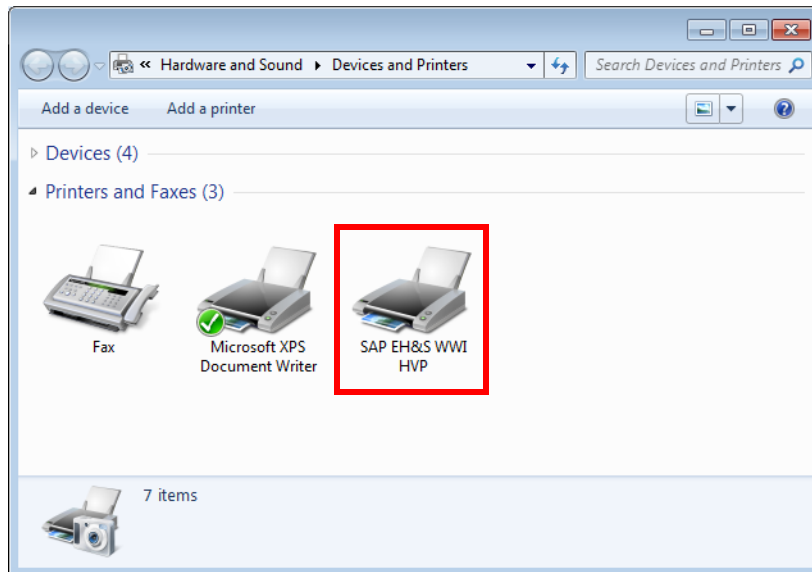
Copy x64\HVP\_PLUGIN\_GP-C83x.dll to the following folder.

C:\Windows\System32\Spool\Drivers\x64\3

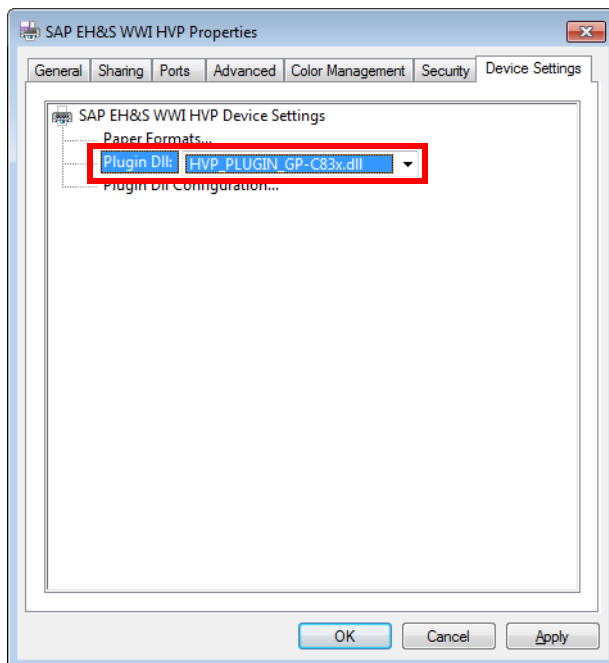
# Set up

After installation, use the following procedure to perform setup.

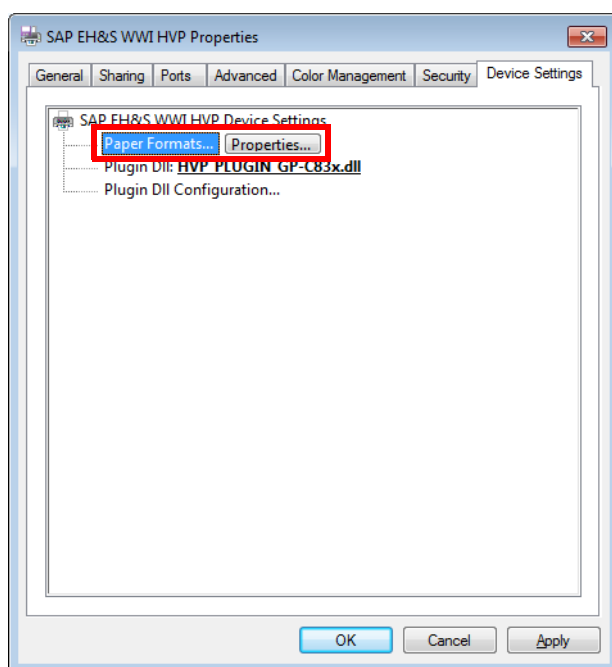
- 1 Open the (Devices and Printers) window, right-click the SAP EH&S WWI HVP icon to display the (SAP EH&S WWI HVP Properties) window.



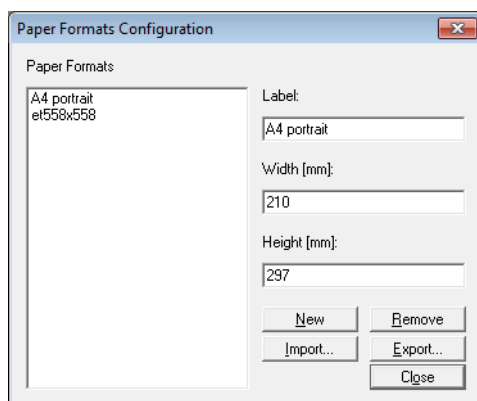
- 2 Open the (Device Setting) tab and for Plugin Dll, set "HVP\_PLUGIN\_GP-C83x.dll".



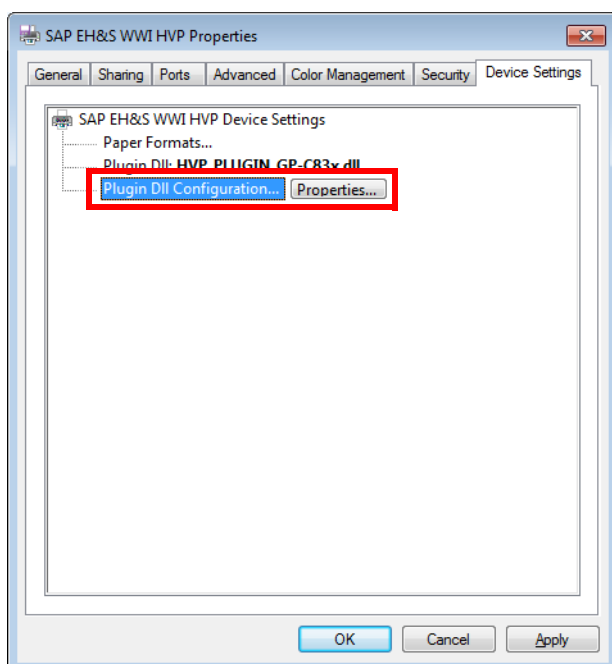
### 3 Select Paper Formats and then click Properties.



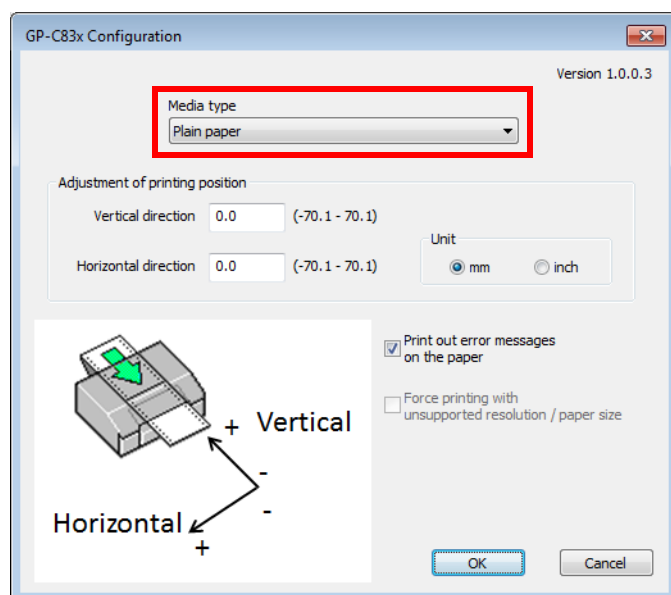
### 4 The (Paper Formats Configuration) window appears. Register the paper size to be used.



## 5 Select Plugin DLL Configuration and then click Properties.

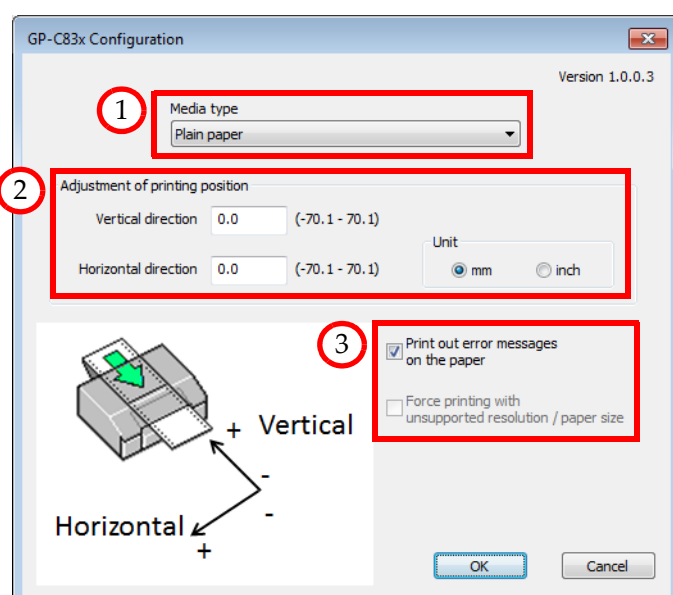


## 6 The (GP-C83x Configuration) window appears. Select the paper type to be used from Media type.

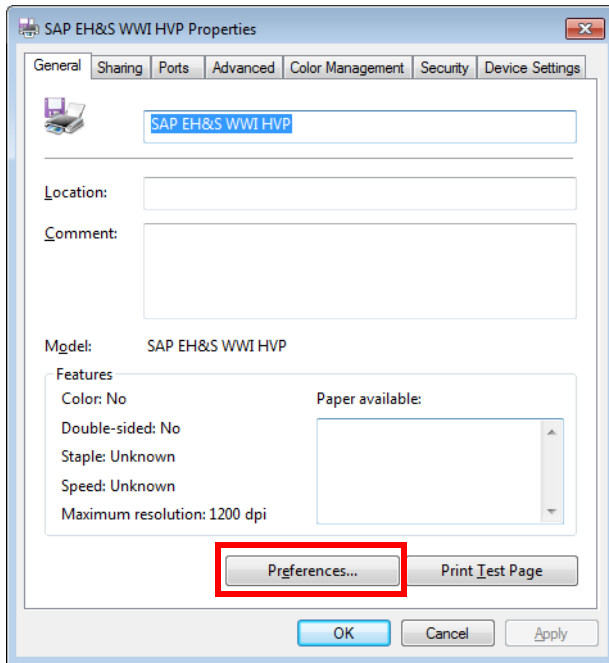


In the [GP-C83x Configuration] window, you can set the following functions.

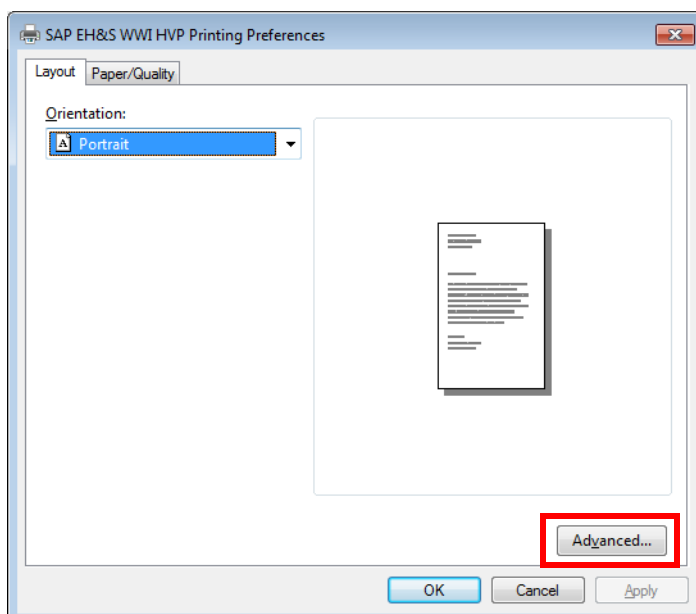
No.	Function	Description	Parameter
1	Media type	The paper type to be used can be set.	<ul style="list-style-type: none"> <li>• Plain paper</li> <li>• Matte paper</li> <li>• Synthetic paper</li> <li>• Glossy paper</li> </ul>
2	Adjustment of printing position	The printing start position can be set in mm or inch.	Vertical direction: -70.1~70.1 Horizontal direction: -70.1~70.1
3	Error notification setting	The method of notification when error occurred can be set.	<ul style="list-style-type: none"> <li>• Print out error messages on the paper</li> <li>• Force printing with unsupported resolution / paper size</li> </ul>



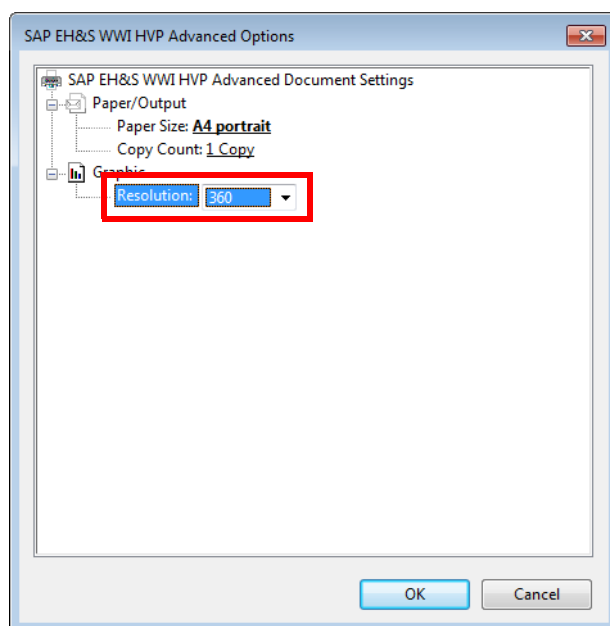
- 7 Open the (General) tab and click Properties to display the (SAP EH&S WWI HVP Printing Preferences) window.



- 8 Click Advanced to display the (SAP EH&S WWI HVP Advanced Options) window.



## 9 For Resolution, set "360".



# Product information

## *OPEN SOURCE SOFTWARE LICENSE*

1. This printer product includes open source software programs listed in Section 4) according to the license terms of each open source software program.
2. The open source software programs are WITHOUT ANY WARRANTY; without even an implied warranty of MERCHANTABILITY AND FITNESS FOR A PARTICULAR PURPOSE. See the license agreements of each open source software program for more details, which are described in OSS.pdf.
3. The license terms of each open source software program are described in OSS.pdf.
4. A list of open source software programs which this printer product includes are as follows.

### ZLIB license

This printer product includes the open source software program "zlib 1.2.8", which applies the terms and conditions provided by owner of the copyright to the "ZLIB license".

### libpng License

This printer product includes the open source software program "libpng 1.6.12", which applies the terms and conditions provided by owner of the copyright to the "libpng License".