

TM-C3500 Series

HVP Plug-in Module

User's Guide

Product Overview

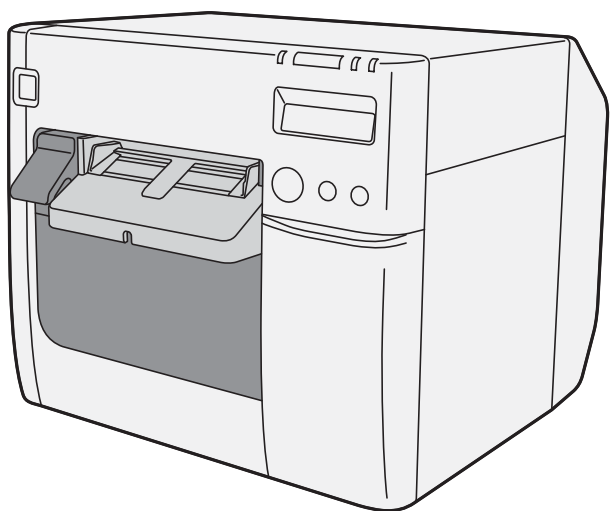
Describes features for the product.

Setting Up the Printing Environment

Describes how to set up the printing environment.

Product information

Describes information about the product.



Cautions

- No part of this document may be reproduced, stored in a retrieval system, or transmitted in any form or by any means, electronic, mechanical, photocopying, recording, or otherwise, without the prior written permission of Seiko Epson Corporation.
- The contents of this document are subject to change without notice. Please contact us for the latest information.
- While every precaution has taken in the preparation of this document, Seiko Epson Corporation assumes no responsibility for errors or omissions.
- Neither is any liability assumed for damages resulting from the use of the information contained herein.
- Neither Seiko Epson Corporation nor its affiliates shall be liable to the purchaser of this product or third parties for damages, losses, costs, or expenses incurred by the purchaser or third parties as a result of: accident, misuse, or abuse of this product or unauthorized modifications, repairs, or alterations to this product, or (excluding the U.S.) failure to strictly comply with Seiko Epson Corporation's operating and maintenance instructions.
- Seiko Epson Corporation shall not be liable against any damages or problems arising from the use of any options or any consumable products other than those designated as Original EPSON Products or EPSON Approved Products by Seiko Epson Corporation.

Trademarks

Microsoft®, Windows®, Windows Vista®, Windows Server®, Win32®, Visual Basic®, Visual C++®, and Visual C#® are registered trademarks of Microsoft Corporation in the United States and other countries.

EPSON is a registered trademark of Seiko Epson Corporation.

Exceed Your Vision is a registered trademark or trademark of Seiko Epson Corporation.

All other trademarks are the property of their respective owners and used for identification purpose only.



SAP and other SAP products and services mentioned herein as well as their respective logos are trademarks or registered trademarks of SAP AG in Germany and in several other countries.

Copyright © 2015 Seiko Epson Corporation. All rights reserved.

For Safety

Key to Symbols

The symbols in this manual are identified by their level of importance, as defined below. Read the following carefully before handling the product.

	Provides information that must be observed to avoid damage to your equipment or a malfunction.
	Provides important information and useful tips.

Restriction of Use

When this product is used for applications requiring high reliability/safety such as transportation devices related to aviation, rail, marine, automotive etc.; disaster prevention devices; various safety devices etc; or functional/precision devices etc, you should use this product only after giving consideration to including fail-safes and redundancies into your design to maintain safety and total system reliability. Because this product was not intended for use in applications requiring extremely high reliability/safety such as aerospace equipment, main communication equipment, nuclear power control equipment, or medical equipment related to direct medical care etc, please make your own judgment on this product's suitability after a full evaluation.

About this Manual

Aim of the Manual

This manual is intended for users of the software and development engineers to provide information about how to use the TM-C35x0 HVP Plug-in Module.

Manual Content

The manual is made up of the following sections:

- Chapter 1 [Product Overview](#)
- Chapter 2 [Setting Up the Printing Environment](#)
- Chapter 3 [Product information](#)



Contents

■ For Safety	3
Key to Symbols	3
■ Restriction of Use	3
■ About this Manual	4
Aim of the Manual	4
Manual Content	4
■ Contents.....	5

Product Overview 6

■ Introduction	6
About this manual.....	6
SAP EH&S WWI HVP System.....	6
■ Basic Functions and Features	7
■ About the package	7
■ Specifications and Restrictions	8

Setting Up the Printing Environment 9

■ Operating Environment	9
OS	9
Software	9
■ Setting Up the Printing Environment.....	10
Server Settings	11
Printer Settings (Using a Network-connected PC)	17
Printer Settings (Using a USB-connected PC).....	24
SAP GLM Setting.....	28
Test Printing	31

Product information 32

■ OPEN SOURCE SOFTWARE LICENSE.....	32
-------------------------------------	----

Product Overview

Introduction

About this manual

This manual is a User's Guide for the HVP plug-in for EPSON TM-C35x0.

This manual explains the HVP plug-in software, which is required when the printer (TM-C3500 Series) is built into the SAP EH&S WWI HVP System.



HVP is the abbreviation of High Volume Printing.

SAP EH&S WWI HVP System

For SAP EH&S WWI HVP System, refer to SAP Note.

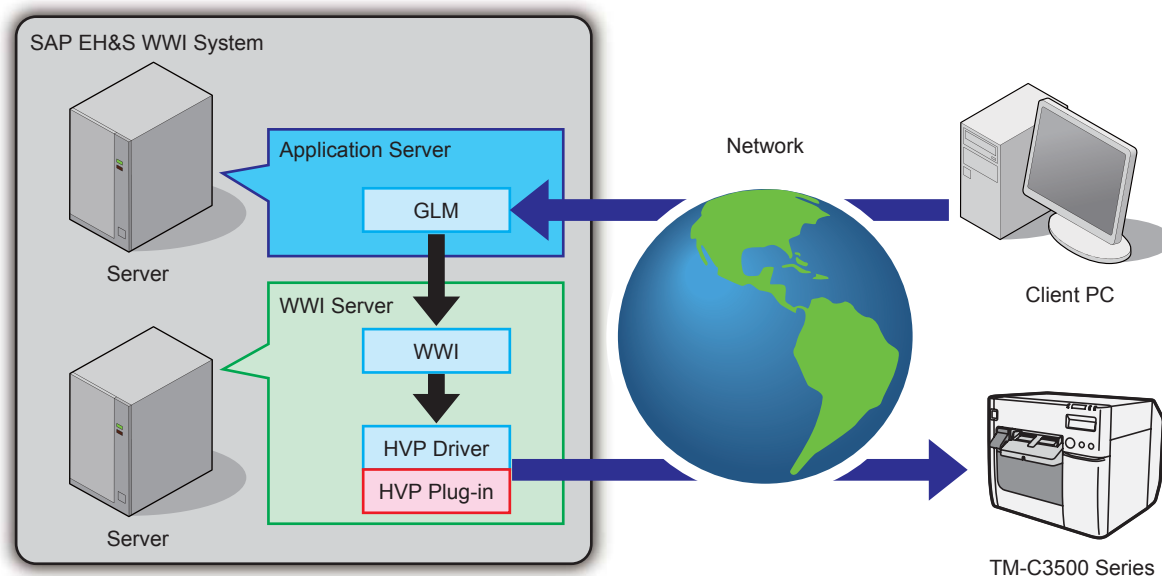
SAP Note can be obtained from SAP Support Portal (<https://support.sap.com/home.html>).

Before reading this manual, make sure to read the following SAP Note.

SAP Note No.1394553: EH&S WWI server installation instructions

Basic Functions and Features

When using SAP EH&S WWI HVP System to perform a large volume of printing via a network, using HVP plug-in for EPSON TM-C35x0 allows you to reduce the load on the server or traffic in the network.



GLM is the abbreviation of Global Label Management.

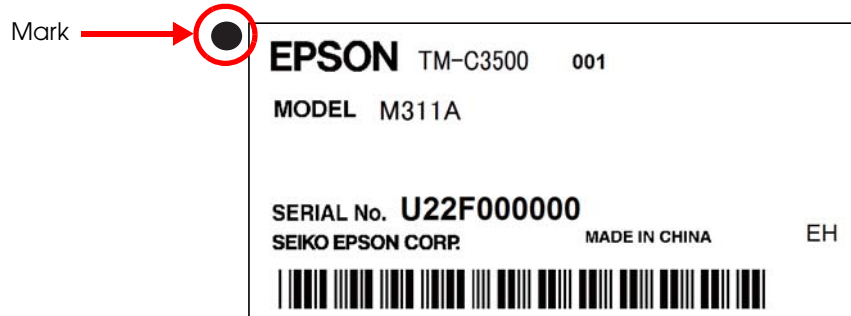
About the package

HVP plug-in for EPSON TM-C35x0's package file "TM-C35x0_HVPxxxx.zip" contains the following files.

Item	Description
x86\HVP_PLUGIN_TM-C35x0.dll	HVP plug-in module for 32-bit OS
x64\HVP_PLUGIN_TM-C35x0.dll	HVP plug-in module for 64-bit OS
TM-C3500_Series_HVP_Plug-in_Module_ug_en_rev.A.pdf	This manual
OSS.pdf	Open Source Software License Terms
readme.txt	Release notes

Specifications and Restrictions

If SAP EH&S WWI HVP System is not used, HVP plug-in for EPSON TM-C35x0 cannot be used.
The HVP plug-in for EPSON TM-C35x0 can be used with models which have the following mark beside the nameplate label placed on the TM-C3500 Series.



Can be used only with Ethernet interface (100BASE-TX/10BASE-T interface).

Cannot be used with parallel interface and USB interface.

Setting Up the Printing Environment

This section describes how to set up the printing environment using the HVP plug-in for EPSON TM-C35x0.

Operating Environment

OS

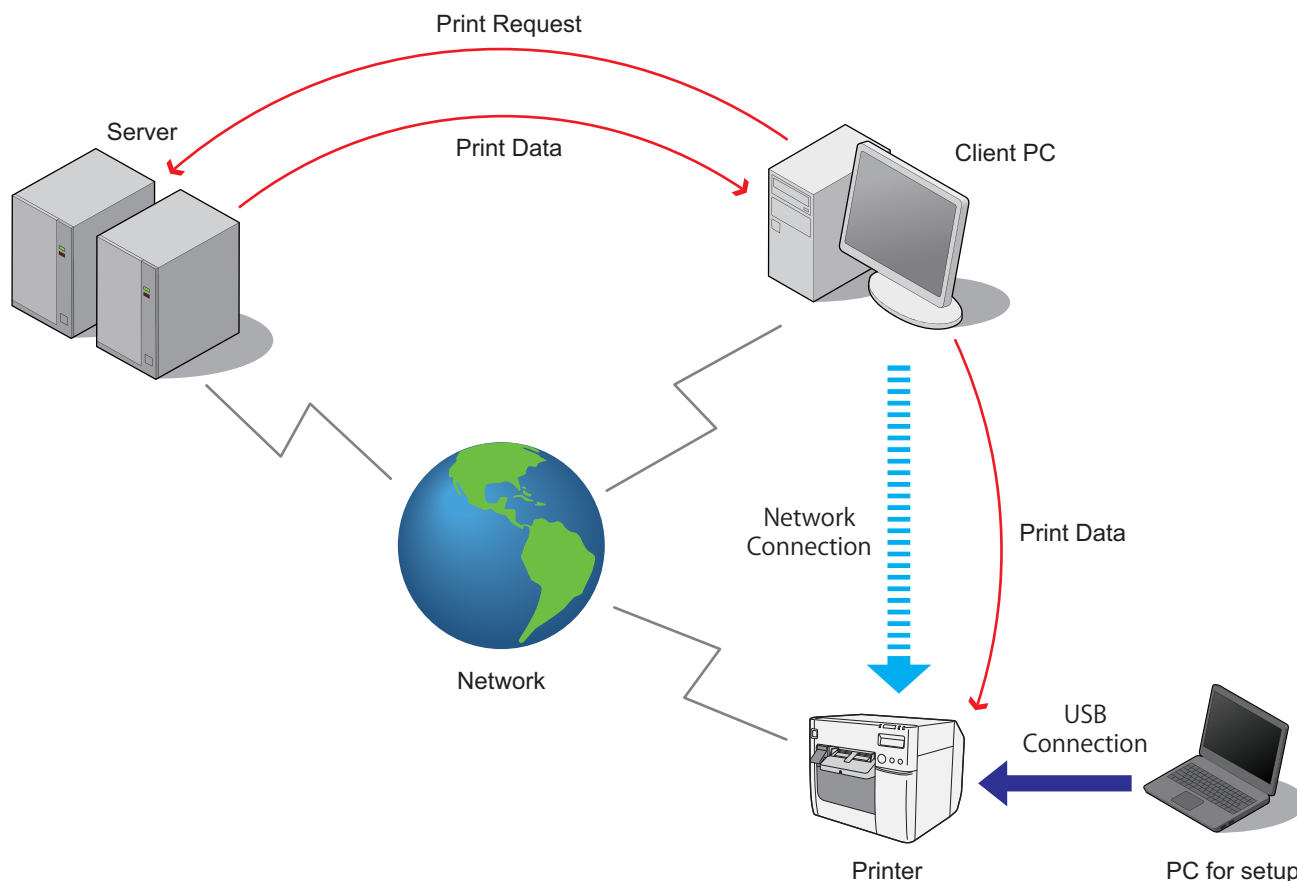
- Windows 8.1 (32/64bit)
- Windows 8 (32/64bit)
- Windows 7 SP1 (32/64bit)
- Windows Server 2012 R2
- Windows Server 2012
- Windows Server 2008 R2 SP1
- Windows Server 2008 SP2 (32/64bit)

Software

SAP EH&S WWI 3.2 SP38 and later

Setting Up the Printing Environment

In order to use the HVP plug-in for EPSON TM-C35x0, performing setting operations that match the print content to the Server and Printer is necessary.



Perform the setting operation in the order of procedure below.

No.	Item	Description	Ref.
1	Server Settings	Installation and setting up of the HVP plug-in for EPSON TM-C35x0	page 11
2	Printer Setting	Setting up printer operation from network-connected PC	page 17
		Setting up printer operation from USB-connected PC	page 24
3	SAP GLM Setting	Set the label dimensions from the Client PC to the Server SAP GLM.	page 28
4	Test Printing	Confirmation of the content of the settings	page 31

Server Settings

Perform the installation of the HVP plug-in for EPSON TM-C35x0 and necessary settings to the Server.



- Server settings must be performed by administrators.
- For details, see SAP Note No.1394553 "EH&S WWI server installation instructions", Section "4.8.2 Setup SAP EH&S WWI HVP printer".

1 According to usage environment, copy the 32-bit or 64-bit DLL to the specified folder.

☐ 32-bit OS environment

Copy x86\HVP_PLUGIN_TM-C35x0.dll to the following folder.

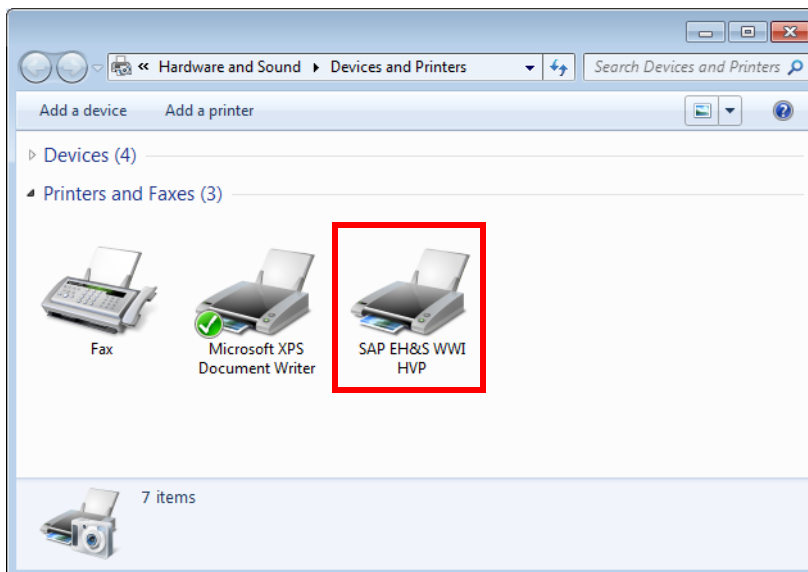
C:\Windows\System32\Spool\Drivers\w32x86\3

☐ 64-bit OS environment

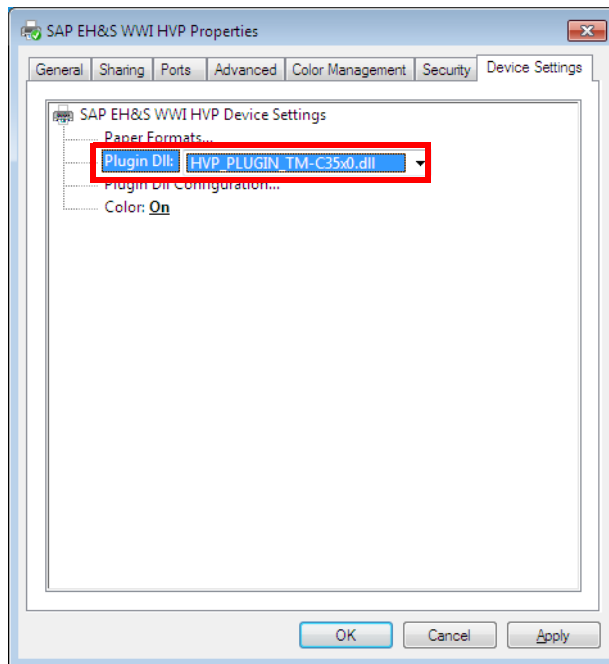
Copy x64\HVP_PLUGIN_TM-C35x0.dll to the following folder.

C:\Windows\System32\Spool\Drivers\x64\3

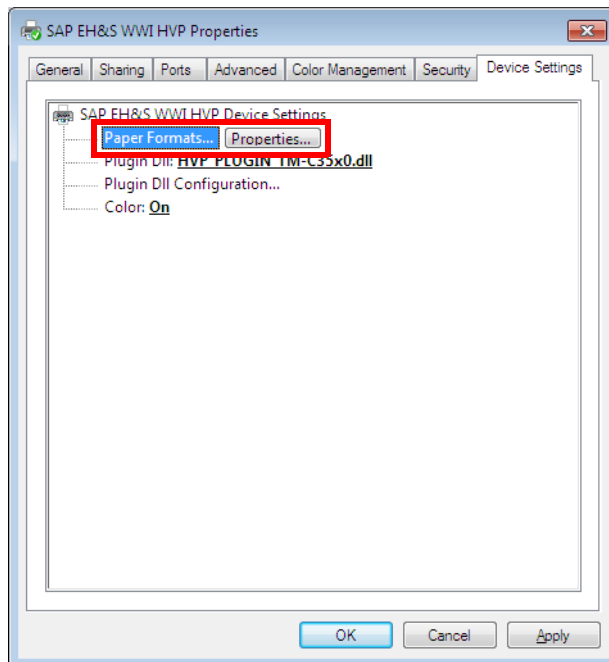
2 Open the (Devices and Printers) window, right-click the SAP EH&S WWI HVP icon to display the (SAP EH&S WWI HVP Properties) window.



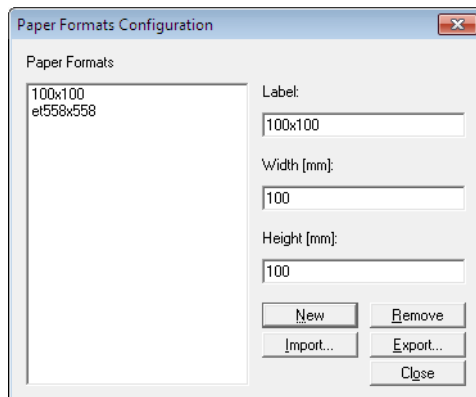
- 3** Open the (Device Setting) tab and for Plugin Dll, set "HVP_PLUGIN_TM-C35x0.dll".



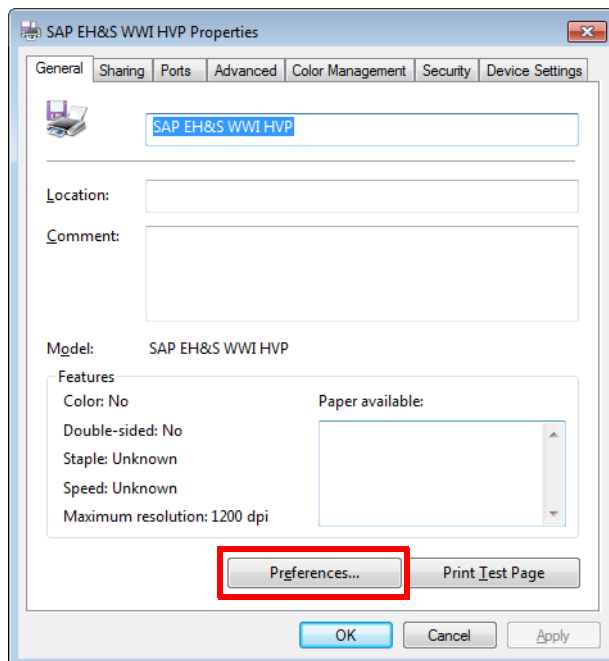
- 4** Select Paper Formats and then click Properties.



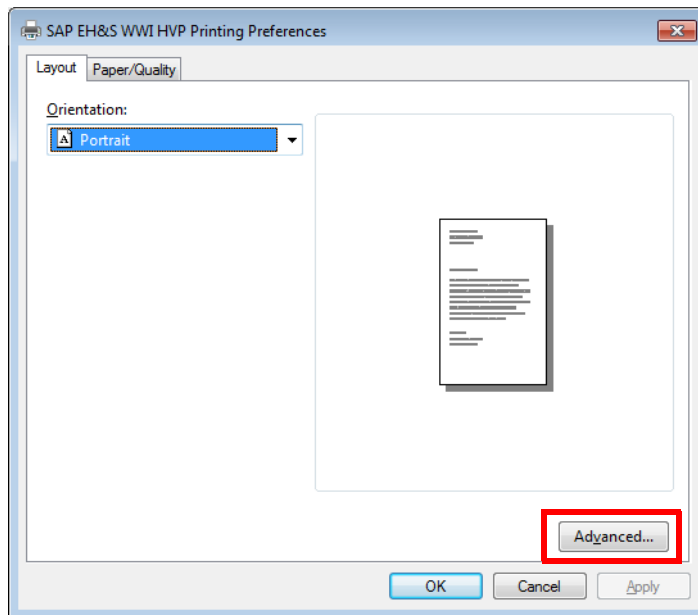
- 5** The (Paper Formats Configuration) window appears. Register the paper size to be used.



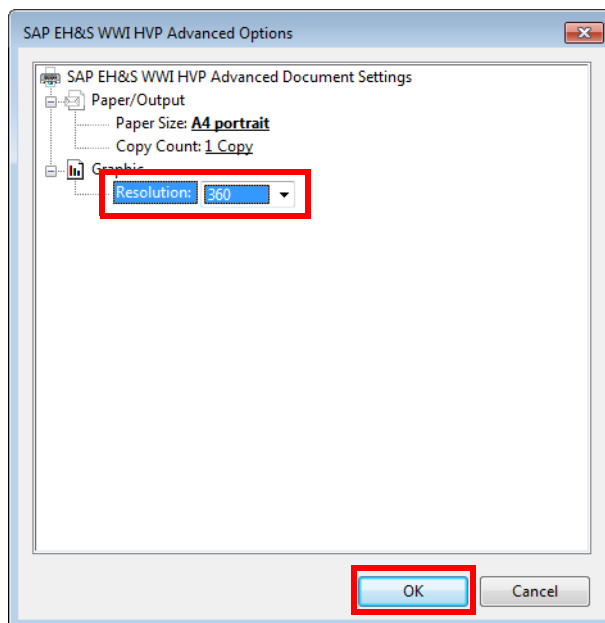
- 6** Open the (General) tab and click Properties to display the (SAP EH&S WWI HVP Printing Preferences) window.



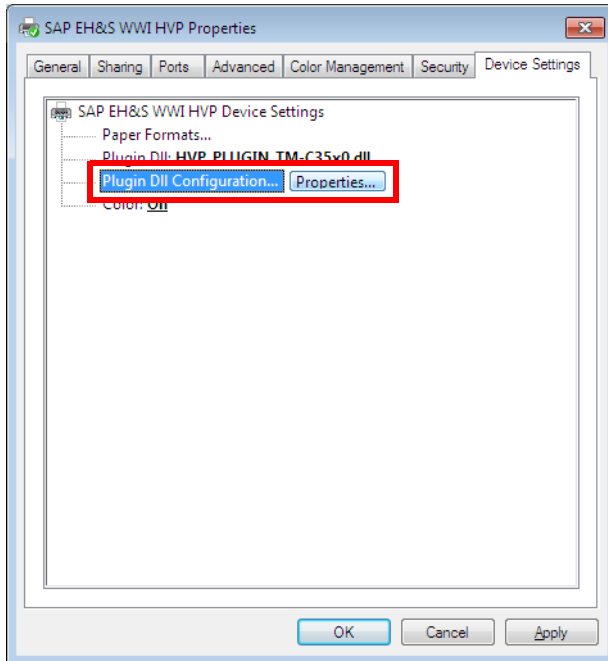
- 7 Click Advanced to display the (SAP EH&S WWI HVP Advanced Options) window.



- 8 Set the Resolution to "360", and click (OK).

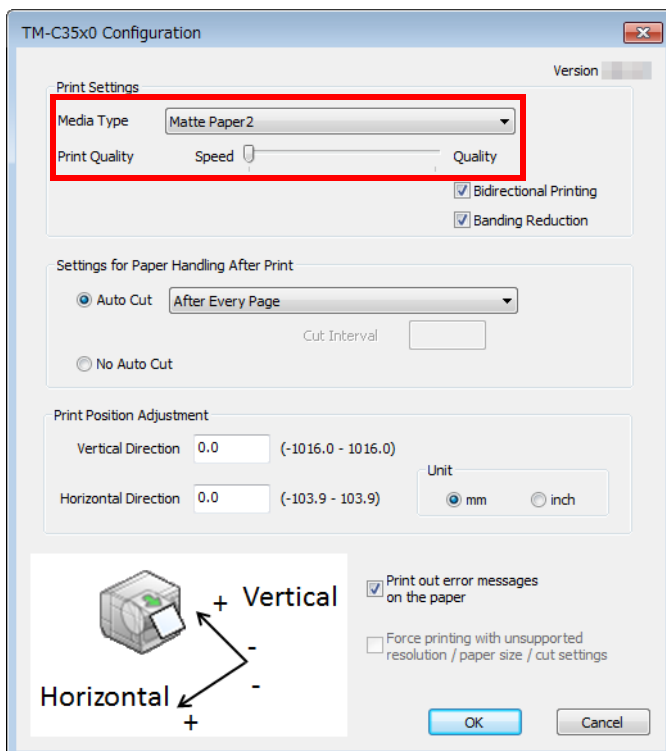


- 9 Open the (Device Settings) tab, select the Select Plugin DLL Configuration, and click Properties.



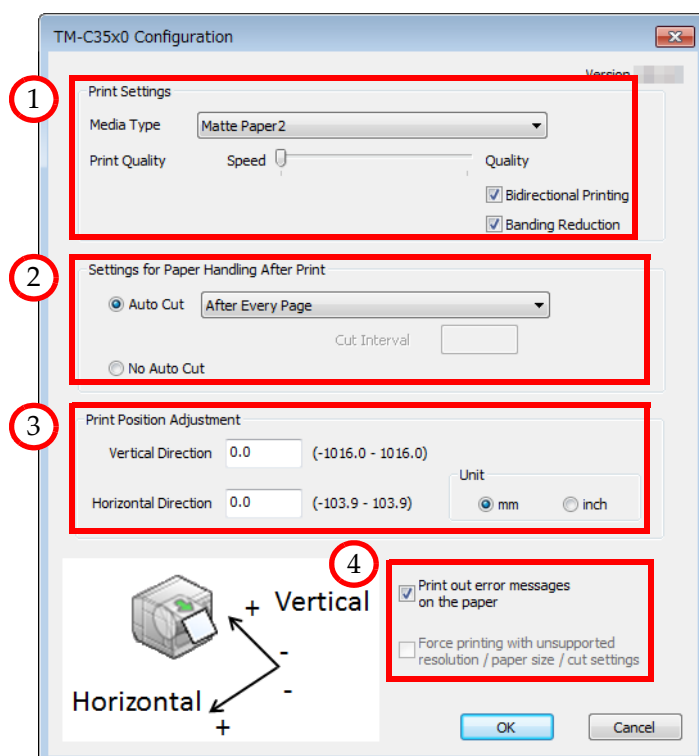
- 10 The (TM-C35x0 Configuration) window appears. Set the following items to match the Media used.

Function	Parameter
Media Type	Plain label, Matte, Matte label, Synthetic label, Glossy label
Print Quality	Speed, Quality



In the [TM-C35x0 Configuration] window, you can set the following functions.

No.	Function		Description	Parameter
1	Print Settings	Media type	The paper type to be used can be set.	<ul style="list-style-type: none"> • Plain Paper • Matte Paper1 • Matte Paper2 • Synthetic Paper1 • Synthetic Paper2 • Glossy Paper
		Print Quality	Setting can be either for print speed priority or image quality priority. Bidirectional printing ON/OFF and banding reduction ON/OFF can be set.	<ul style="list-style-type: none"> • Speed/Quality • Bidirectional Printing • Banding Reduction
2	Settings for Paper Handling After Print		Auto Cut operation after printing can be set.	Auto Cut: After Every Page, Only After Last Page, After Specified Number of Pages No Auto Cut
3	Print Position Adjustment		The printing start position can be set in mm or inch.	Vertical direction: -1016.0~1016.0 Horizontal direction: -103.9~103.9
4	Error notification setting		The method of notification when error occurred can be set.	<ul style="list-style-type: none"> • Print out error messages on the paper • Force printing with unsupported resolution / paper size



Printer Settings (Using a Network-connected PC)

Perform setting of the Media Source and Media Detection of the Printer using a Client PC connected to a network.



Before performing the setting of the Printer, complete Setting Up the Printer.
For details, see the TM-C3500 Series Technical Reference Guide.

If performing settings to two or more Printers, refer to the [Settings using the EPSON Monitoring Tool \(page 17\)](#).

If performing settings to one Printer, refer to the [Settings using the TM-C3500 Series Printer Driver \(page 22\)](#).

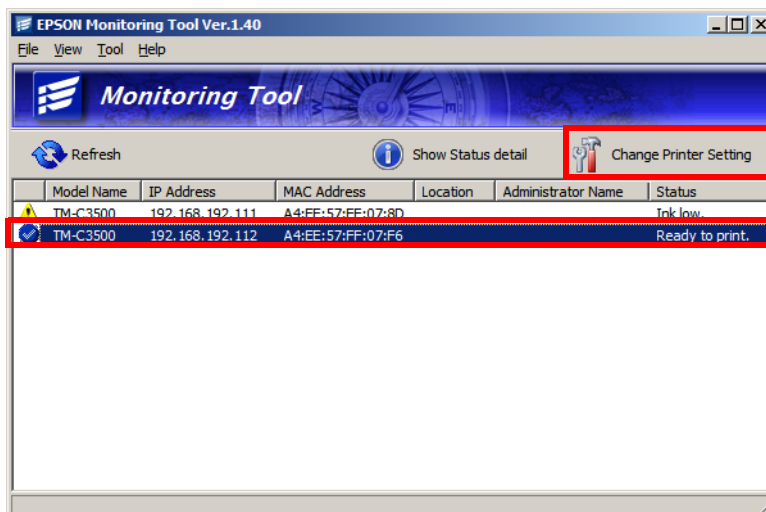
Settings using the EPSON Monitoring Tool

- 1 Install the EPSON Monitoring Tool to the Client PC.

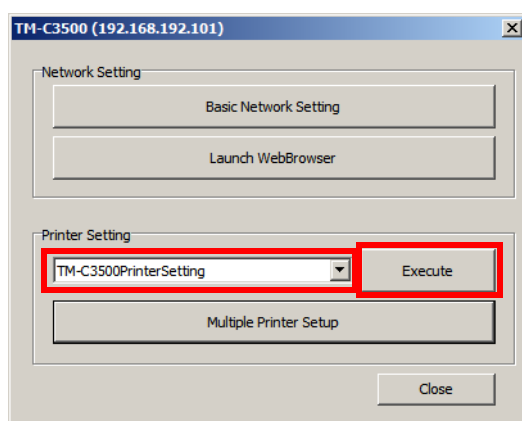


- Download the EPSON Monitoring Tool from the website below.
<https://download.epson-biz.com/modules/colorworks/>
- For details of the EPSON Monitoring Tool install method and operations method, see the EPSON Monitoring Tool User's Manual provided with the EPSON Monitoring Tool.

- 2 Start the EPSON Monitoring Tool.
- 3 Select one unit which setting needs to be changed from among the TM-C3500 Series printers, and click (Change Printer Setting).

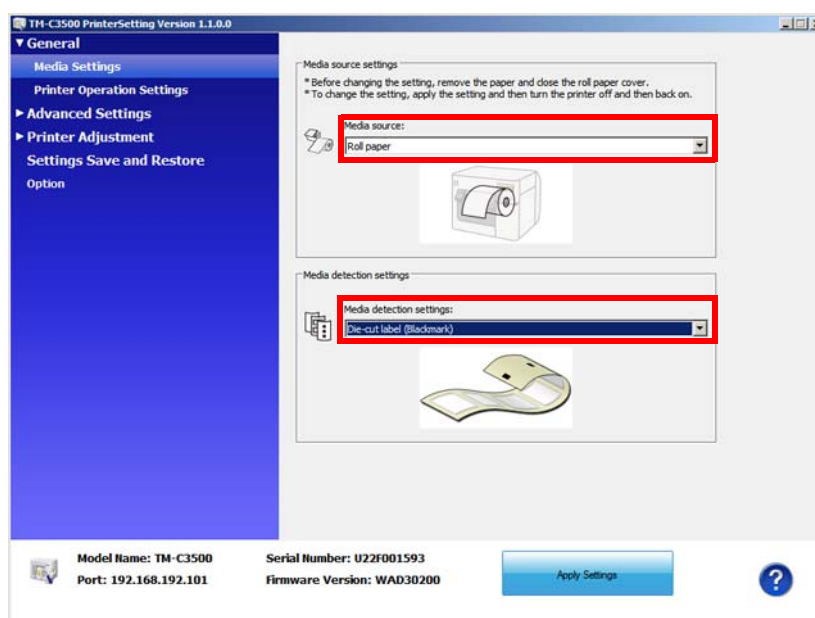


- 4 At Printer Setting, select (TM-C3500PrinterSetting), and click (Execute).

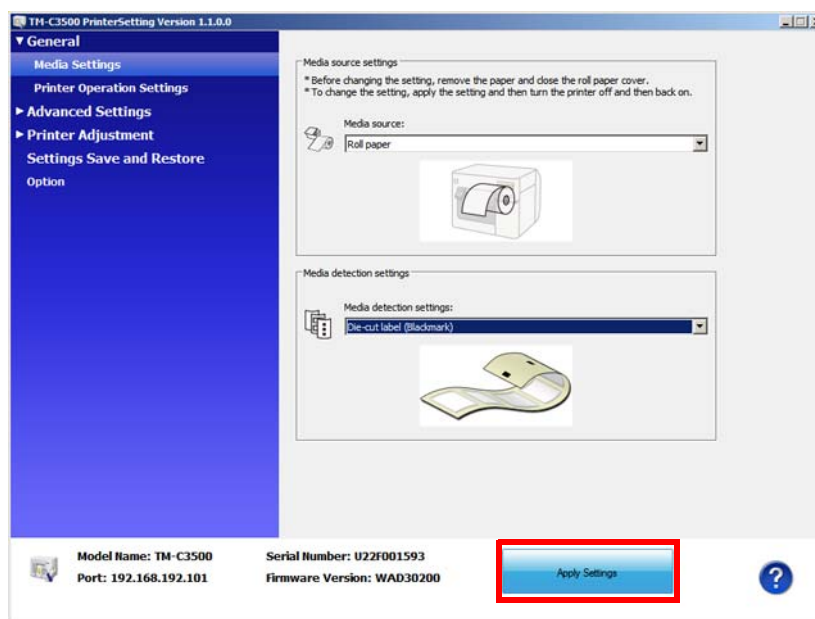


- 5 Select (Media Settings), and set the following items to match the Media used.

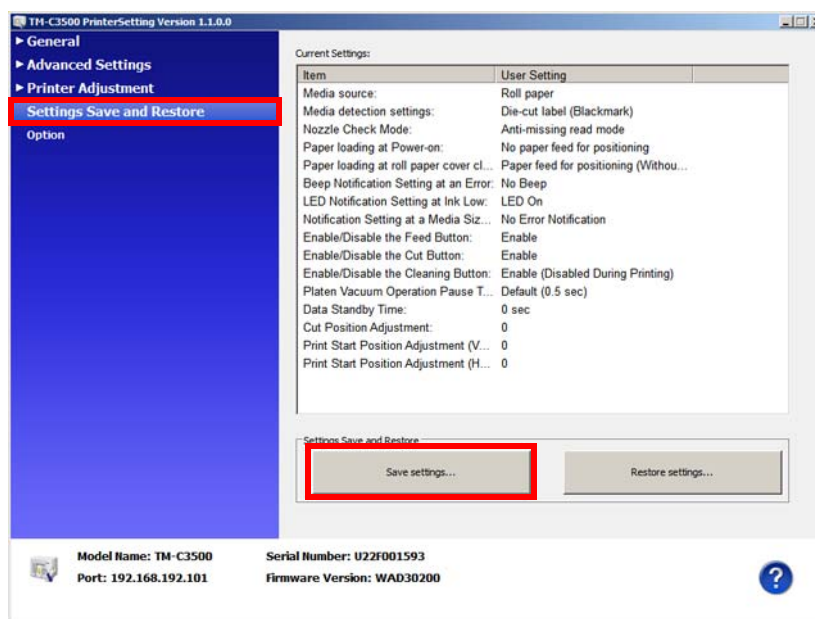
Function	Parameter
Media Source	<ul style="list-style-type: none"> • Roll paper • Fanfold paper
Media Detection	<ul style="list-style-type: none"> • Continuous paper • Continuous paper (Blackmark) • Full-page label • Transparent die-cut label • Die-cut label (Blackmark) • Die-cut label (Gap)



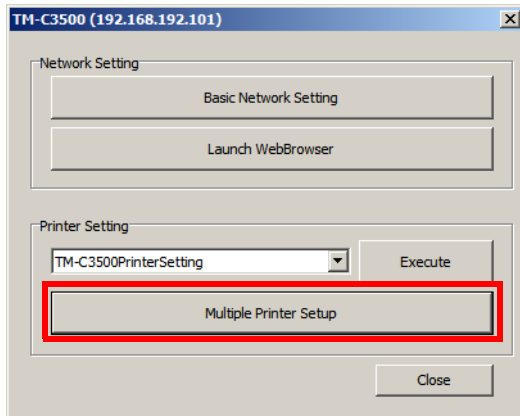
6 Click (Apply Settings) to complete the settings.



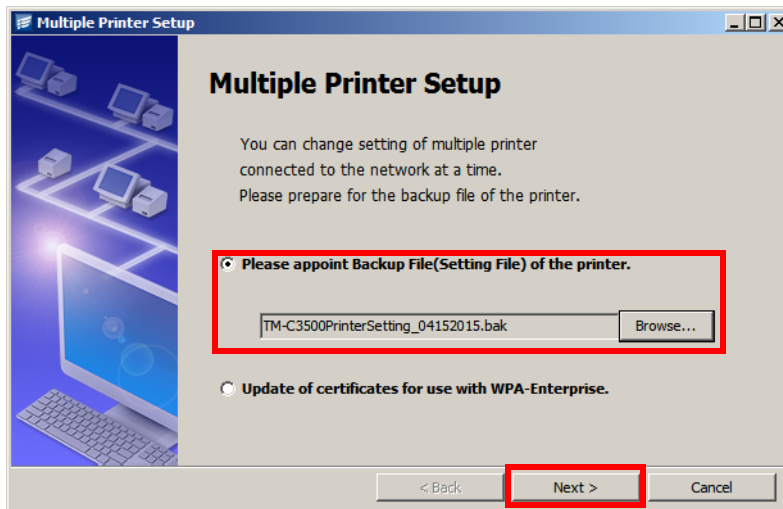
7 Select (Settings Save and Restore), click (Save settings...), and save the contents set in step 5 and step 6 under any desired file name.



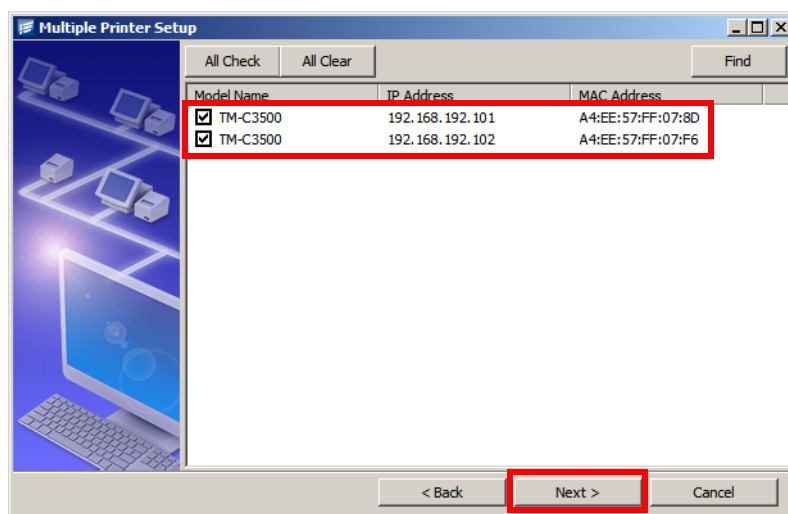
- 8 After saving the settings, close the window to end PrinterSetting.
- 9 Select one unit on the EPSON Monitoring Tool screen from among the TM-C3500 Series printers, and click (Change Printer Setting).
- 10 Click (Multiple Printer Setup) under Printer Setting.



- 11 Select (Please appoint Backup File (Setting File) of the printer), specify the file saved in [step 7](#), and click (Next >).



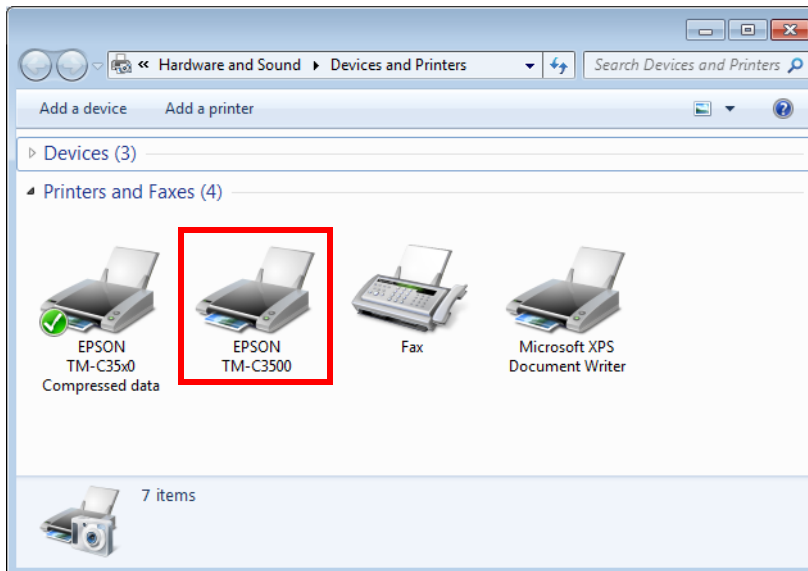
- 12** Select the TM-C3500 Series printer which setting is being changed, and click (Next >).



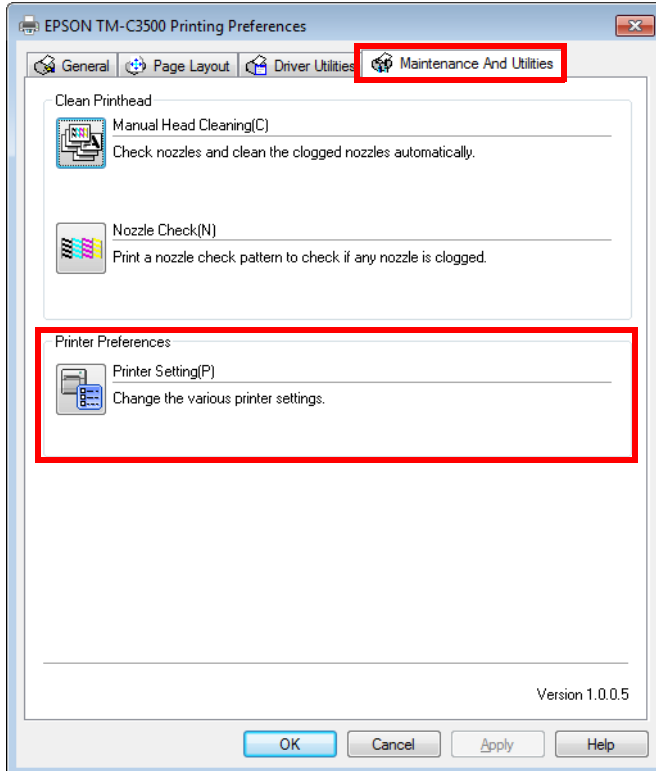
- 13** Thereafter, follow the instructions on the screen, and complete the settings.

Settings using the TM-C3500 Series Printer Driver

- 1 Open the (Devices and Printers) screen, right-click on the (EPSON TM-C3500) icon, and select (Printing Preferences).

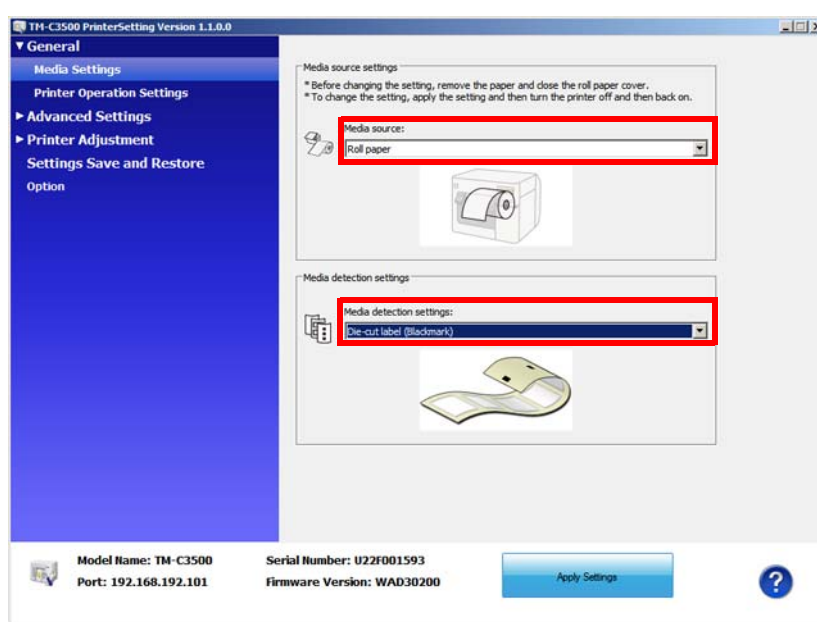


- 2 Select the (Maintenance And Utilities) tab under the (EPSON TM-C3500 Printing Preferences) screen, and click (Printer Setting).



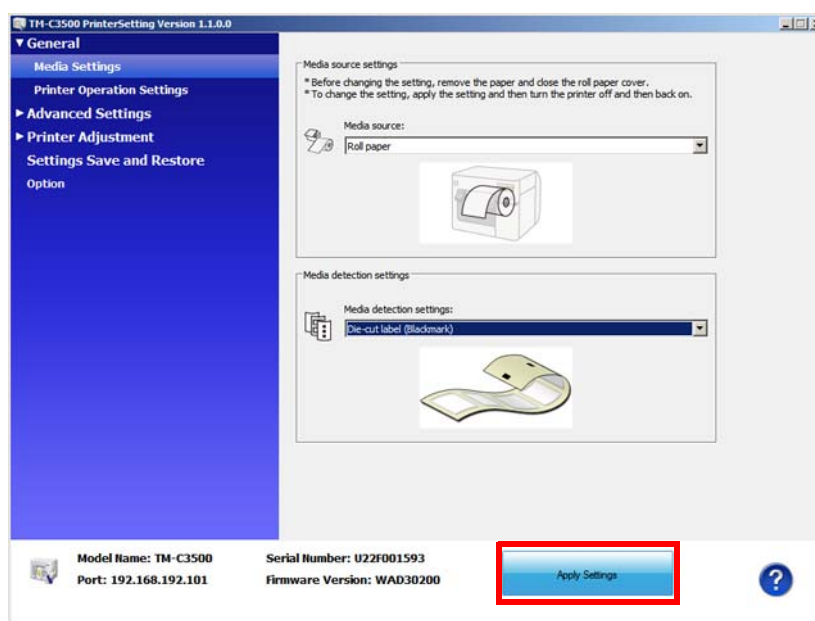
- 3** Select (Media Settings), and set the following items to match the Media used.

Function	Parameter
Media Source	<ul style="list-style-type: none"> • Roll paper • Fanfold paper
Media Detection	<ul style="list-style-type: none"> • Continuous paper • Continuous paper (Blackmark) • Full-page label • Transparent die-cut label • Die-cut label (Blackmark) • Die-cut label (Gap)



Only the Media Source and Media Detection setting content is reflected.

4 Click (Apply Settings) to complete the settings.



Printer Settings (Using a USB-connected PC)

Connect the TM-C3500 Series printer and the PC for setup using a USB cable, and make the Media Source and Media Detection settings of the printer.



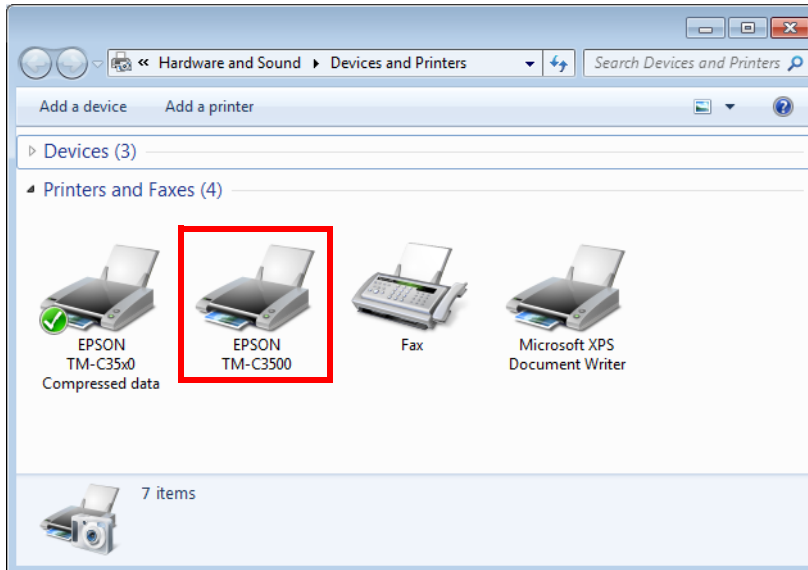
- Before performing the setting of the Printer, complete Setting Up the Printer. For details, see the TM-C3500 Series Technical Reference Guide.
- A PC not connected to a network can be used for the setup PC.

1 Install the USB Printer Class Device Replacement Service to the PC.

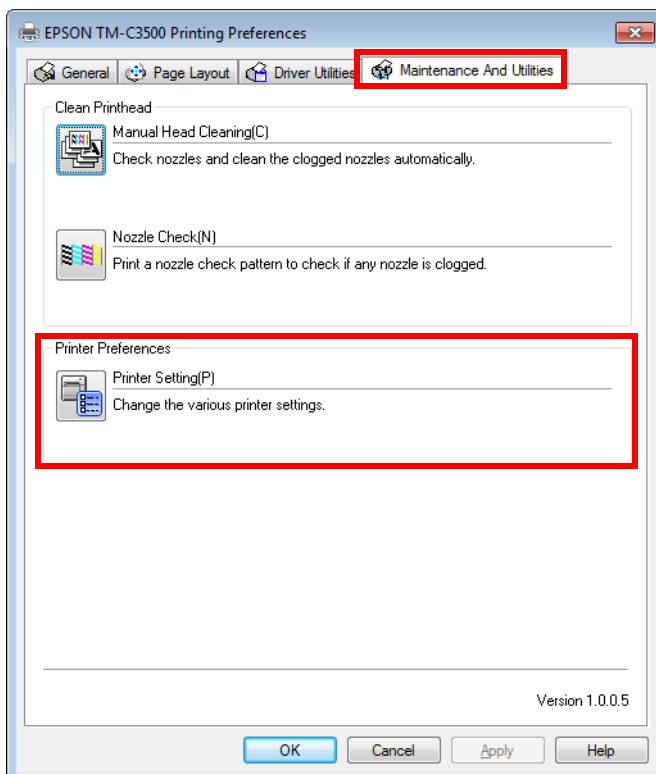


- For the USB Printer Class Device Replacement Service, either use the packaged CD or download from the website below.
<https://download.epson-biz.com/modules/colorworks/>
- For details of the USB Printer Class Device Replacement Service, see the TM-C3500 Series Technical Reference Guide.

- 2 Connect the TM-C3500 Series printer which setting needs to be changed and the PC for setup using a USB cable.
- 3 Open the (Devices and Printers) screen, right-click on the (EPSON TM-C3500) icon, and select (Printing Preferences).

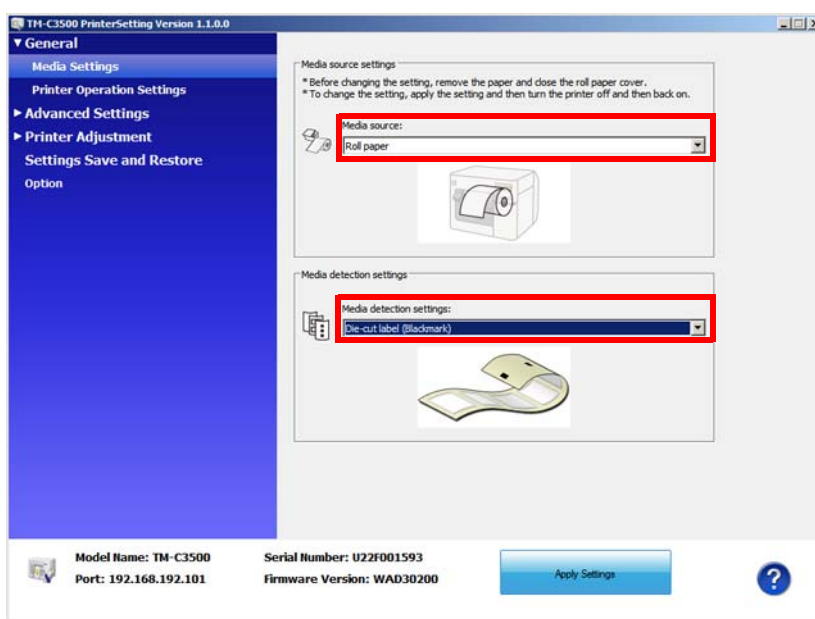


- 4 Select the (Maintenance And Utilities) tab under the (EPSON TM-C3500 Printing Preferences) screen, and click (Printer Setting) .



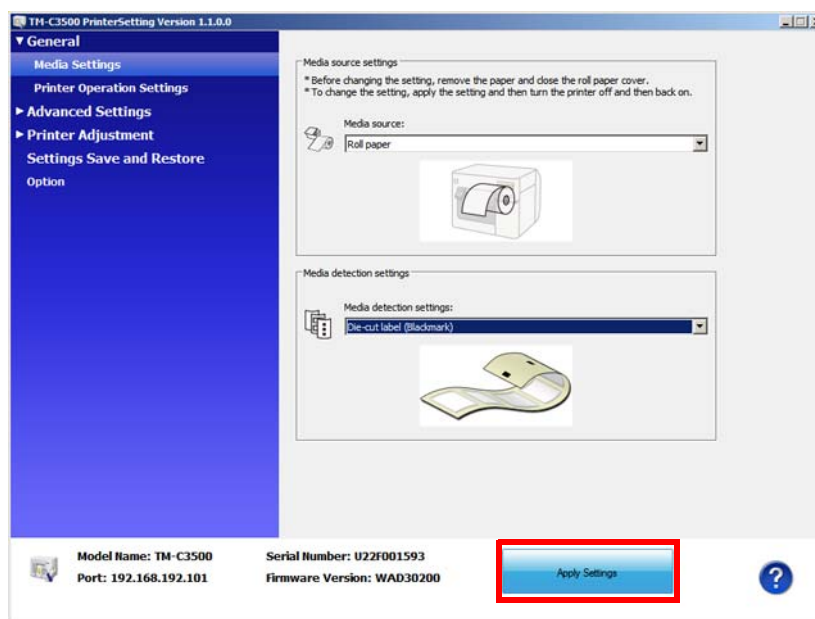
- 5** Select (Media Settings), and set the following items to match the Media used.

Function	Parameter
Media Source	<ul style="list-style-type: none"> • Roll paper • Fanfold paper
Media Detection	<ul style="list-style-type: none"> • Continuous paper • Continuous paper (Blackmark) • Full-page label • Transparent die-cut label • Die-cut label (Blackmark) • Die-cut label (Gap)



Only the Media Source and Media Detection setting content is reflected.

6 Click (Apply Settings) to complete the settings.



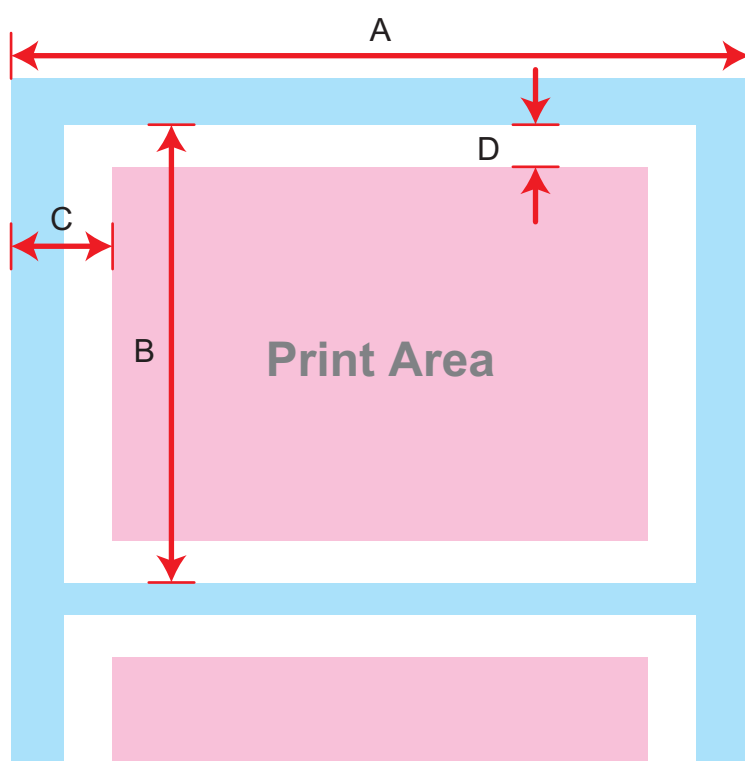
7 Repeat [step 2](#) to [step 6](#) for all TM-C3500 Series printers which settings needs to be changed.

SAP GLM Setting

Measure the label dimensions for the Media type used, and set to SAP GLM [Edit Label Stock]-[Attributes].

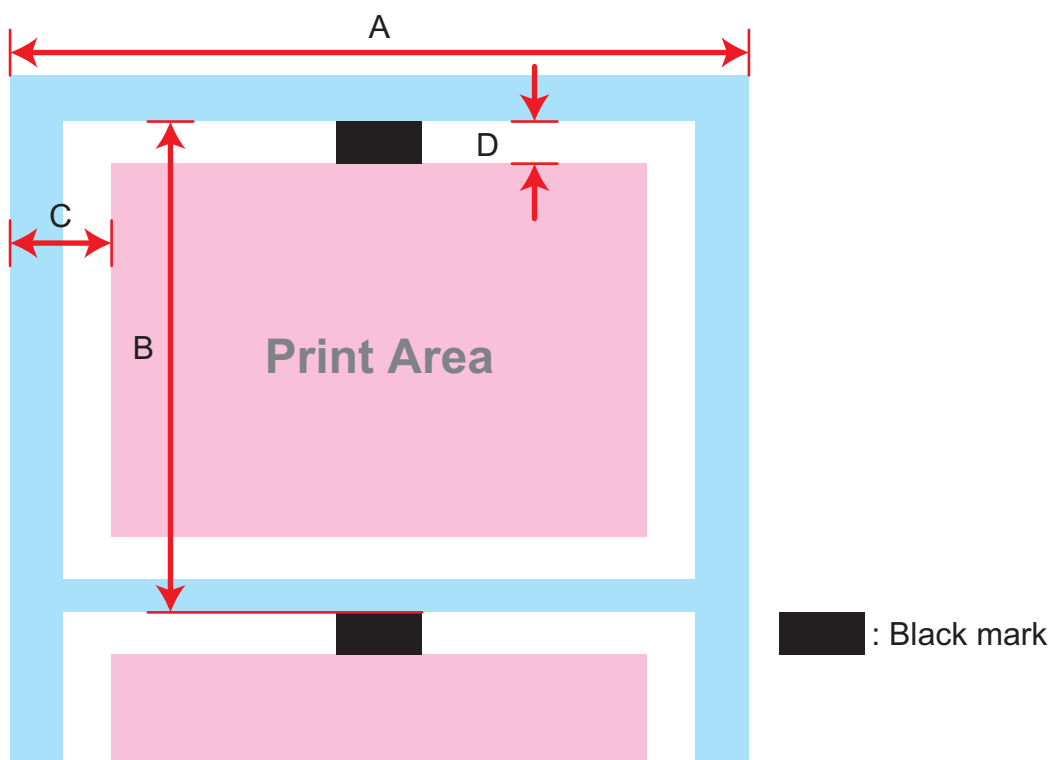
Media type	Ref.
Die-cut label paper	page 28
Die-cut label paper (with black mark)	page 29
Continuous paper, all-surface label paper	page 30

Die-cut label paper



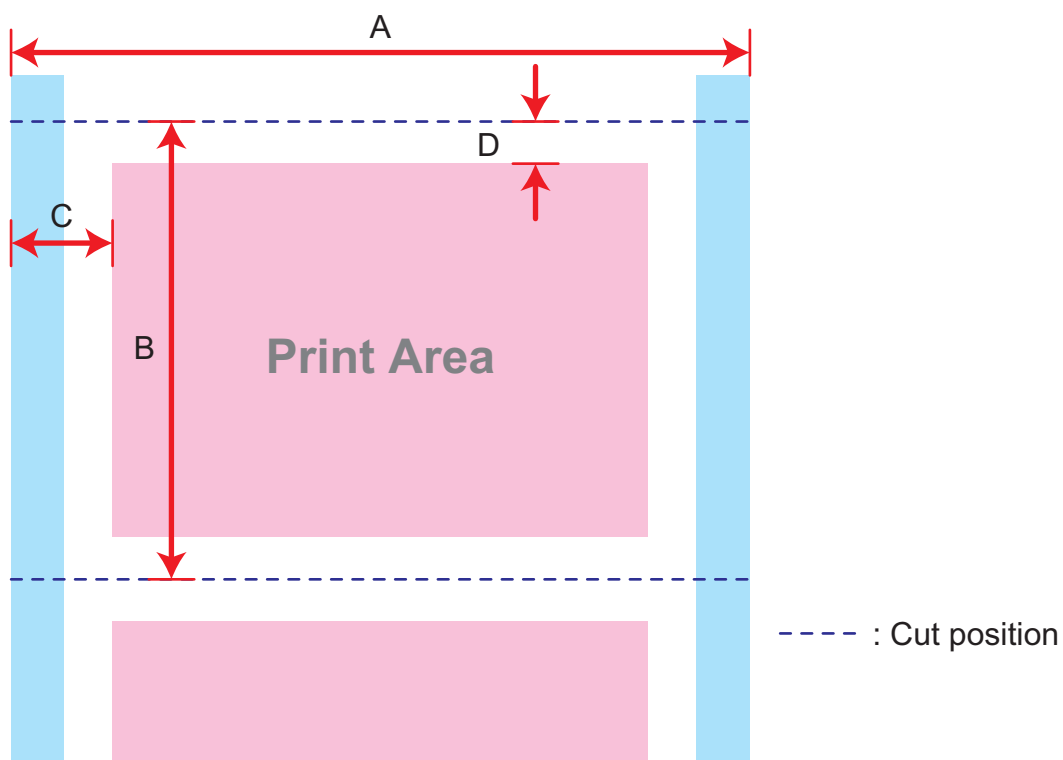
Symbols	Function	Parameter
A	Label Stock Width	30 to 112 mm (1.18 to 4.41 inch)
B	Label Stock Height	8 to 1016 mm (0.31 to 40.00 inch)
C	Distance from Edge: Left	0 to 112 mm (0 to 4.41 inch)
D	Distance from Edge: Top	0 to 1016 mm (0 to 40.00 inch)

Die-cut label paper (with black mark)



Symbols	Function	Parameter
A	Label Stock Width	30 to 112 mm (1.18 to 4.41 inch)
B	Label Stock Height	8 to 1016 mm (0.31 to 40.00 inch)
C	Distance from Edge: Left	0 to 112 mm (0 to 4.41 inch)
D	Distance from Edge: Top	0 to 1016 mm (0 to 40.00 inch)

Continuous paper, all-surface label paper



Symbols	Function	Parameter
A	Label Stock Width	30 to 112 mm (1.18 to 4.41 inch)
B	Label Stock Height	8 to 1016 mm (0.31 to 40.00 inch)
C	Distance from Edge: Left	0 to 112 mm (0 to 4.41 inch)
D	Distance from Edge: Top	0 to 1016 mm (0 to 40.00 inch)

Test Printing

After settings of the Server, Printer, and SAP GLM are completed, always be sure to perform a test printing from the application that is actually being used before starting operations.

If desired printing results is not obtained, review the setting content of the Server, Printer, and SAP GLM.

When this happens

Phenomenon	Countermeasure	Ref.
Media Size Error occurs	<ul style="list-style-type: none"> Check the settings of the Media used and of the TM-C3500 Series Printer, and the settings of the SAP GLM. If not resolved, ask the Server administrator, and check the Server settings. 	<ul style="list-style-type: none"> page 17, page 28 page 11
Fails to print in spots		

Product information

OPEN SOURCE SOFTWARE LICENSE

1. This printer product includes open source software programs listed in Section 4) according to the license terms of each open source software program.
2. The open source software programs are WITHOUT ANY WARRANTY; without even an implied warranty of MERCHANTABILITY AND FITNESS FOR A PARTICULAR PURPOSE. See the license agreements of each open source software program for more details, which are described in OSS.pdf.
3. The license terms of each open source software program are described in OSS.pdf.
4. A list of open source software programs which this printer product includes are as follows.

ZLIB license

This printer product includes the open source software program "zlib 1.2.8", which applies the terms and conditions provided by owner of the copyright to the "ZLIB license".

libpng License

This printer product includes the open source software program "libpng 1.6.12", which applies the terms and conditions provided by owner of the copyright to the "libpng License".